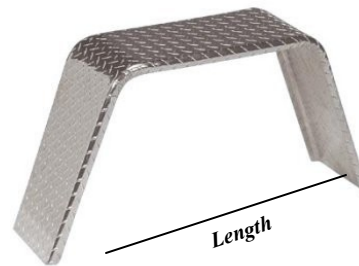


FENDERS: SINGLE AXLE ROUND



PART#	WIDTH	LENGTH	HEIGHT	MATERIAL	TIRE
37-F55	5.5"	19.25"	5.25"	16GA Steel	8"
37-F775X28-1R	7.75"	28"	10"	16GA Steel	13", 14"
37-8431	9"	32"	15"	16GA Steel	14", 15"
37-F9X32-RWB	9"	32"	15"	16GA Steel (w/Back)	14", 15"
37-F9X32-1RTP	9"	32"	15.25"	14GA Steel TREADPLATE	14", 15"
37-1075X32-1R	10.75"	32"	15.25"	16GA Steel	14", 15"
37-F1075X36-1R	10.75"	36"	20"	16GA Steel	15", 16"
37-F13X36-1R	13"	36"	20"	16GA Steel	15", 16", 16.5"

FENDERS: SINGLE AXLE JEEP STYLE

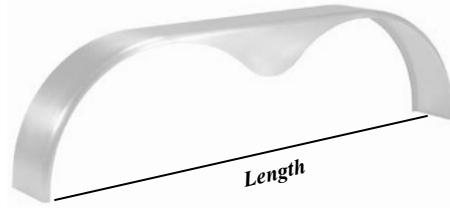


PART#	WIDTH	LENGTH	HEIGHT	MATERIAL	TIRE
37-J8824	8"	24"	8"	16GA Steel	8", 12"
37-8383	10"	21"	8"	16GA Steel	10"
39-J101733AT	10"	33"	17"	Aluminum Treadplate	13" - 15"
37-8386	10"	36"	19.25"	16GA Steel	13"- 15"
39-011-1A	10"	36"	19.25"	16GA Steel	13"- 15"

FENDERS: TANDEM AXLE ROUND



No Teardrop in Center



Teardrop in Center

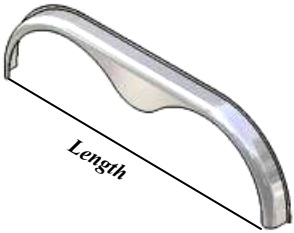
PART#	WIDTH	LENGTH	HEIGHT	MATERIAL	TIRE	STYLE
37-357040	9"	66"	19.75"	16GA Steel	14", 15"	Teardrop
37-8461	9"	72"	20.5"	16GA Steel	15", 16"	No Teardrop
37-8471	9"	72"	20.5"	16GA Steel	15"- 16"	Teardrop
39-830-A	9"	72"	20.5"	.090 Aluminum	15", 16"	Teardrop
37-8473	10"	58"	9"	16GA Steel	13"	No Teardrop
37-8465	10.75"	72"	20.5"	16GA Steel	15", 16"	Teardrop
39-840-A	10.75"	72"	20.5"	.090 Aluminum	15", 16"	Teardrop

FENDERS: TANDEM AXLE JEEP STYLE



PART#	WIDTH	LENGTH	HEIGHT	MATERIAL	TIRE
37-8388	10"	69"	19"	16GA Steel	13"- 15"
37-J101972-TP	10"	72"	19"	14GA Steel TREADPLATE	15", 16"

FENDERS: FLARE

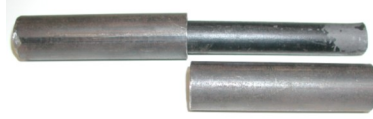


PART#	WIDTH	LENGTH	HEIGHT	MATERIAL	TIRE
39-895	1"	72"	20"	.090 ALUM	14", 15"
39-351140	1.5"	72"	20"	.080 ALUM	14", 15"
39-351160	1.69"	72"	22"	.080 ALUM	15", 16"
39-8001	2.5"	72"	20"	.090 ALUM	14", 15"
39-9001	4.5"	72"	20"	.090 ALUM	14", 15"

RAMP HINGES



A



B



C



D



E

PART#	DESCRIPTION	STYLE
61-HB1	4" U-Bracket Hinge Assembly (includes 9/16" bolt)	A
61-2308	8" Long Hinge Assembly (3/4" Rod, 1" Roll)	B
61-2312	12" Long Hinge Assembly (3/4" Rod, 1" Roll)	C
61-230060	9" Long Hinge Assembly w/ Zerk (3/4" Rod, 1" Roll)	D
61-B2426FSL	Hinge, Formed Strap w/ 5.25" Leaf	E

RAMP SPRING ASSEMBLIES



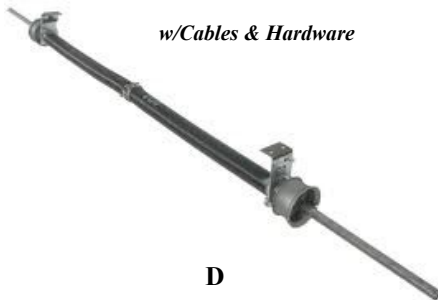
A



B



C



w/Cables & Hardware

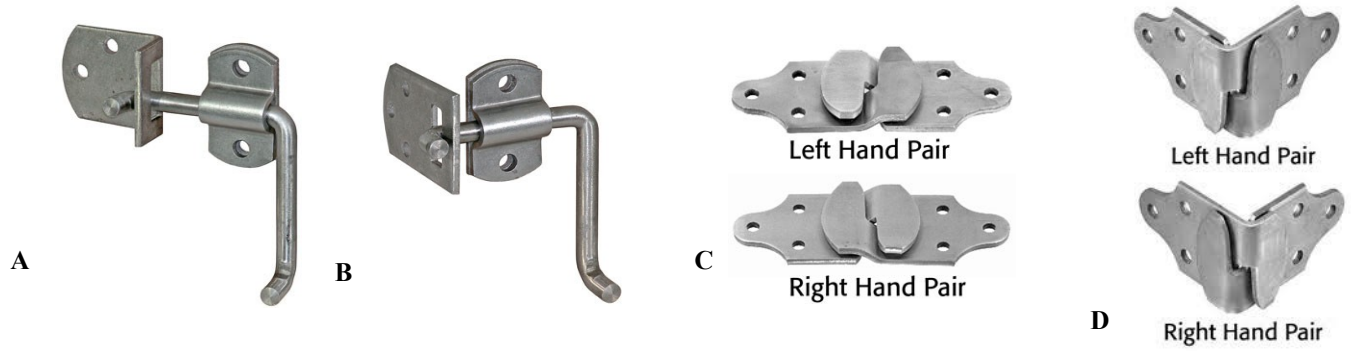
D



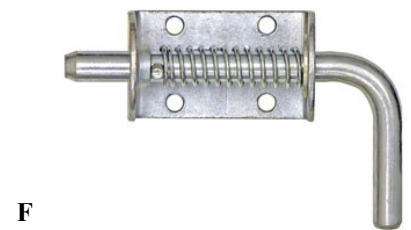
E

PART#	DESCRIPTION	STYLE
10-5201000	EZ Gate by Buyers Trailer Tailgate Lift Assist	A
10-GL1	The Gorilla-Lift Trailer Tailgate Lift Assist	B
10-16933LH	Ramp Spring 2,000 lbs, Left Hand	C
10-16933RH	Ramp Spring 2,000 lbs, Right Hand	C
10-ERS160D96	Ramp Door Kit-Dual Spring 96"	D
10-ERS120D81	Ramp Door Kit-Dual Spring 81"	D
10-ERS80S66	Ramp Door Spring Kit Assembly 66"	D
61-Cables	Replacement Cables for <i>most</i> Ramp Doors (142")	E

GATE AND SIDE RACK ACCESSORIES



PART#	DESCRIPTION	STYLE
65-06025	Straight Side Security Latch	A
65-06030	Corner Mount Security Latch Set	B
65-06015	Straight Stake Rack Connector Set (Left & Right Side)	C
65-06020	Corner Stake Rack Connector Set (Left & Right Side)	D
65-03020	6" Heavy Duty Rubber Hood Catch	E
65-06035	1/2" Spring Loaded Latch w/ Keeper	F
65-B2596KZ	3/4" Spring Loaded Latch w/ Keeper	F
55-B5760	Rubber Ramp Bumper 2" x 2.5" x 8" (Pair)	G
55-1	Rubber Ramp Bumper 2-1/2" x 1"	H



VENTS & DOME VENTILATORS



PART#	DESCRIPTION	STYLE
61-14X14	14" x 14" Dome Vent w/White Polypropylene Top *New Style	A
61-5003	Vent Installation Kit (24 Screws, Puddy Tape)	Not Shown
61-520160	Replacement Vent Lid 14" x 14" Old Style	Not Shown
61-520162	Replacement Vent Lid 14" x 14" New Style	Top of "A"
61-822110	Aero Flow Vent-2 Piece (Available in black or white)	B
61-824500	Max Air Cover, Kit	C
61-530475	Vent Operator Arm w/ 6" Arm	D
61-H710	Replacement Vent Crank-Plastic	E (Plastic)
61-H711	Replacement Vent Crank-Die Cast	E

DOOR ACCESSORIES

PART#	DESCRIPTION	STYLE
61-6H	Door Hold Back-6"	A
61-10H	Door Hold Back-10"	A
61-231800	Handle, Grab Bar-13"	B
61-236100	Door Latch w/Keys	C
61-2	Door Hasp (4 3/4" Hole Centers)	D
61-5	Door Hasp (4" Hole Centers)-2 Piece	E
61-B215805	Door Hasp (4 1/4" Hole Centers)	D
61-234100	Cam Bar Lock, 45"	F
61-234110	Cam Bar Lock, 55"	F
61-305120	Carriage Bolt 1.5" x 5/16"	G
61-304850	Anti-Theft Bolt	H
61-311100	Cam Nut Retainer	I
61-396120	T-45 Bit (Tamper Proof)	J



A



B



C



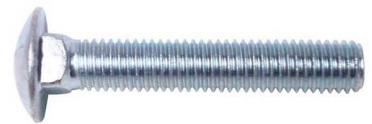
D



E



F



G



H



I



J